

U.S. Perspective on Maritime Security

International Maritime Transportation Security Seminar

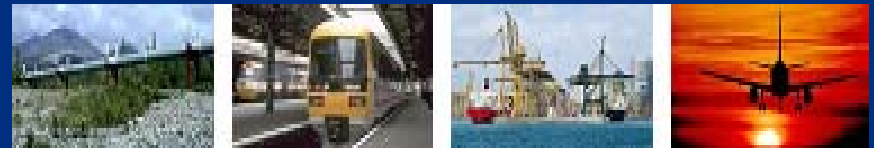
Japan International Transport Institute

Tokyo, Japan

October 29, 2003



Transportation
Security
Administration



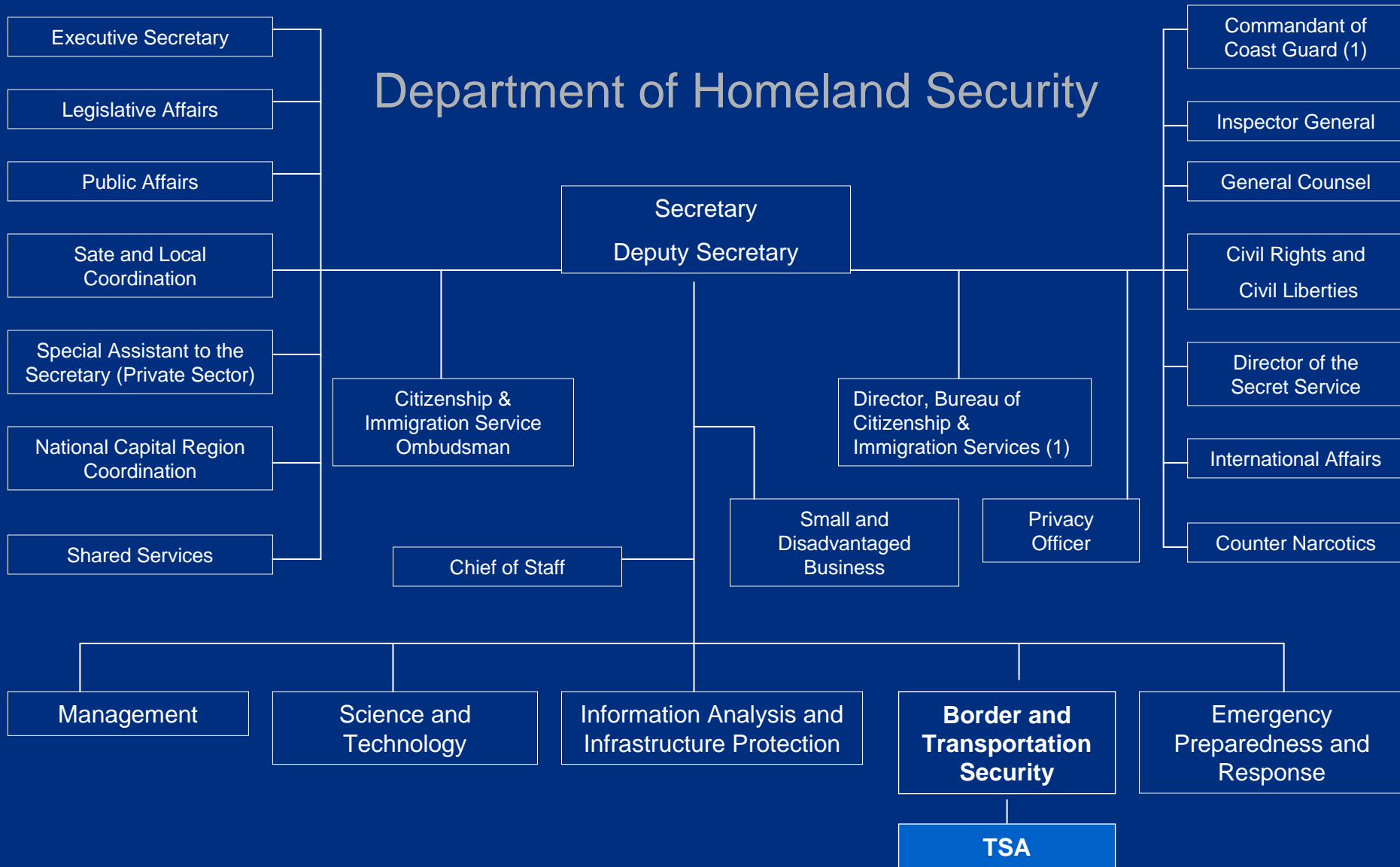
TSA Background

- Responsible for security across all transportation modes
 - Maritime
 - Aviation
 - Rail
 - Highway
 - Pipelines
 - Mass Transit

Strategic Goal: To ensure that no terrorist or other individual is successful in causing harm or significant disruption to the national transportation system.



Department of Homeland Security



Maritime Transportation



- 95 percent of U.S. imports arrive via maritime shipping
- Japan is #1 maritime trade partner in terms of value of imports and exports (2001)
- 361 U.S. ports
- 51,000 visits from 7,500 foreign vessels
- 6 million shipping containers
- Intermodality

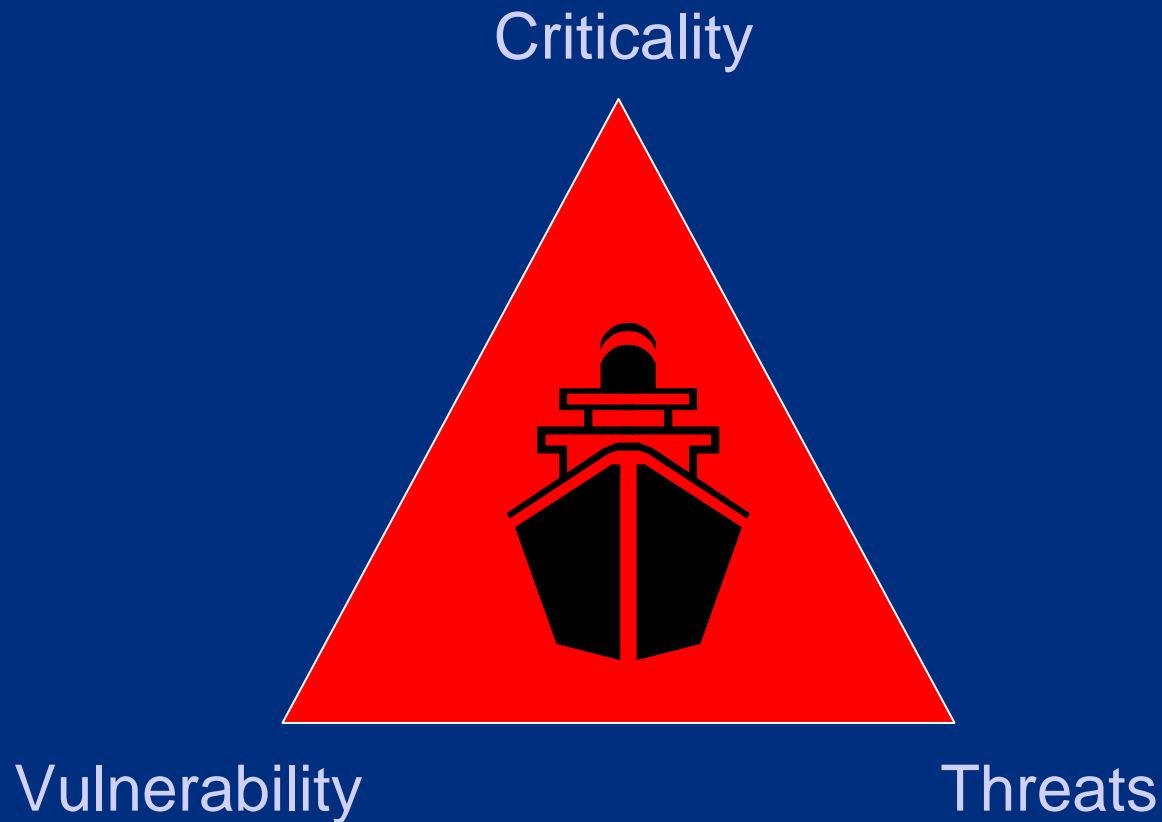


TSA Strategic Approach

- Consistent and complementary security standards
- Overall supply chain security
- Public-private partnerships
- Threat-based risk management



Risk-Managed Approach



Criticality Prioritization

General roll-up of assets (Pass, Ferry, Container (part) Bridges (Part))									
Name	State	Type	Source	Health & Welfare	Lose of Function	Economic Impact	Reconstitution	Symbolic Importance	Total
		Bridge/Suspension	NBI/DO/MTMC	10	13	8	10	9	50
		Passenger Terminal	AAPA	16	12	6	8	7	49
		Passenger Terminal	AAPA	16	12	6	8	7	49
		Passenger Terminal	AAPA	16	12	6	8	7	49
		Bridge/Suspension	NBI/DO/MTMC	8	11	8	9	9	45
		Bridge/Suspension	NBI/DO/MTMC	7	10	6	9	9	41
		Bridge/Truss	NBI/DO/MTMC	11	14	7	7	1	40
		Bridge/Girder	NBI/DO/MTMC	9	12	8	7	3	39
		Bridge/Girder	NBI/DO/MTMC	11	12	7	8	1	39
		Ferry Terminals	PS-RAT	9	9	8	8	5	39
		Passenger Terminal	PS-RAT	8	10	6	7	7	38
		Bridge/Truss	NBI/DO/MTMC	7	13	7	7	3	37
		Passenger Terminal	M&L PAX	9	7	8	8	5	37
		Passenger Terminal	M&L PAX	9	7	8	8	5	37
		Passenger Terminal	M&L PAX	9	7	8	8	5	37



Government Role

- United States Coast Guard (USCG)
 - Lead agency for maritime security
- Bureau of Customs and Border Protection (CBP)
 - Border Security
 - Container Security Initiative (CSI)
 - Customs Trade Partnership Against Terrorism (C-TPAT)
- Transportation Security Administration (TSA)
 - National Transportation System Security Manager



Maritime Transportation Security Act

TSA Role:

- Develop standards for recovery of the transportation system after a transportation security incident
- Develop a transportation worker identification credential
- Develop performance standards for cargo
- Implement an integrated maritime information system



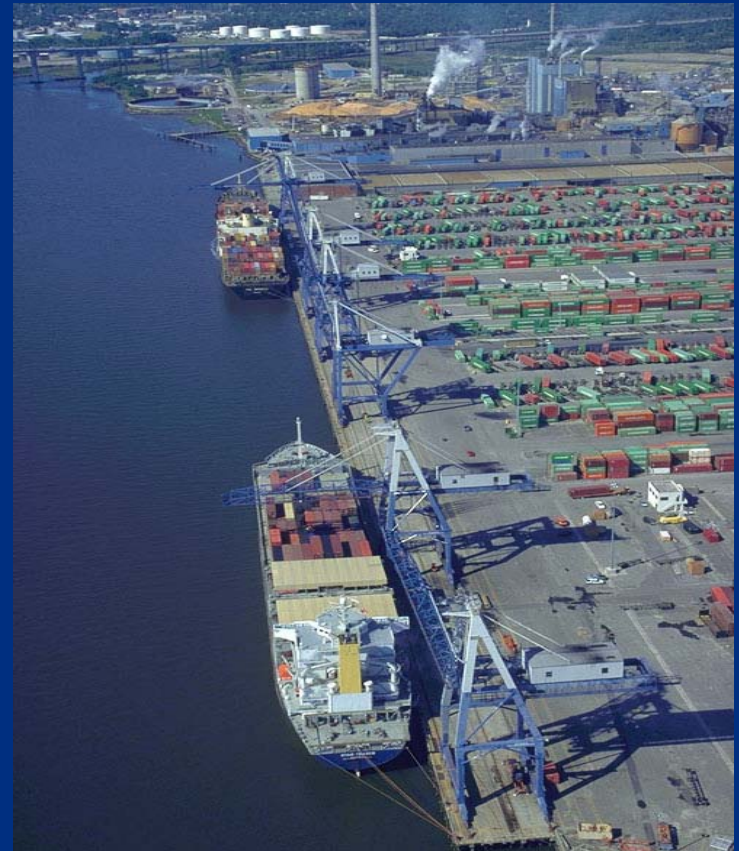
Vulnerability Assessments

- Internet-based technology
- Threat-based for maritime vessels and facilities
- Meets ISPS/MTSA requirements
- Assists in development of security plans



Financing Security

- \$30 to \$50 billion worldwide annual cargo loss
- \$12 to \$25 billion loss to U.S.
- Improved security will help reduce theft
- \$492 million for U.S. port security



USS Cole (2000)



- 17 killed
- 39 injured





Transportation Security Administration



Transportation
Security
Administration